

Instruction for Hands-on Session using Hozo Tool

(Rev 1.3-1 July 21)

This document gives brief instructions for the SEED Workshop hands-on session using the Hozo tool, with preparations that **we ask participants do before the session.**

Overview

The purpose of this hands-on session is to discuss the road map for sustainable development through conceptual map generation using the Hozo tool. Here, we focus on only a few examples, due to the diversity of participants' interests and limitation of ontology (current base knowledge) of the tool.

Preparations for Hands-on Session [mandatory]

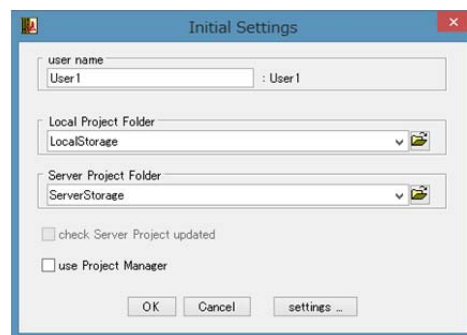
We ask the participants to set up the Hozo tool before the hands-on session.

- 1) Download Hozo tool for the purpose of the SEED Workshop hands-on session at the following URL (the tool has been tested on Windows and Mac OS)
<http://www.hozo.jp/seed-hands-on/>
- 2) Extract the downloaded ZIP file (HozoToolForSEED-WS.zip).
- 3) Run the Hozo tool by clicking "oe5run.jar" in the extracted folder.
 - *You need Java Runtime Environment (JRE). If it is not installed (that is, you couldn't run the Hozo tool), please download and install it from <http://www.java.com/en/download/>.*
- 4) If you are able to bring up the Hozo tool successfully that's all you need to do before the workshop!
- 5) However, to get familiar with the tool, you can start exploring the concept map using the following quick tutorial.

Quick instruction of the tool [optional]

To help your understanding during the hands-on session, try the following steps before the workshop.

- 1) When you run the tool, a window for initial settings is shown. Please input "user name" (arbitrary name) and press "OK" button.
- 2) A main window of Hozo-Ontology Editor is shown.
Select "File" menu -> "open File"



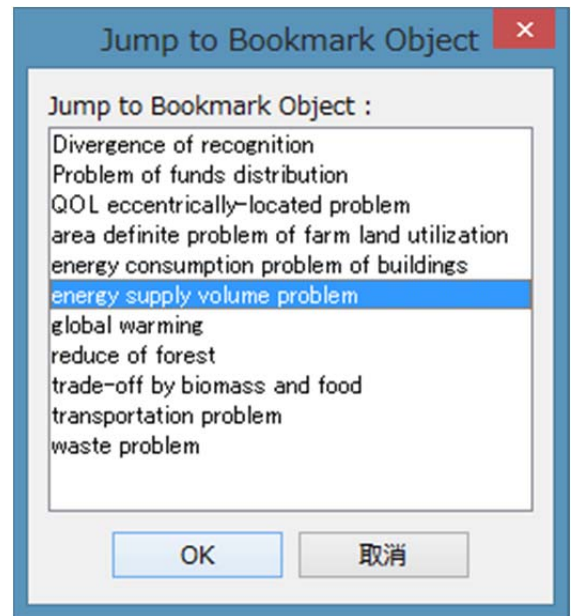
and then choose the file named “SSOntoForSEED-WS20130722.xml”.

3) Select “Edit” menu -> “Bookmark” -> “jump Bookmark” (or use shortcut “ctrl”+”B”).

Then a list of terms (concepts) is show on another dialog.

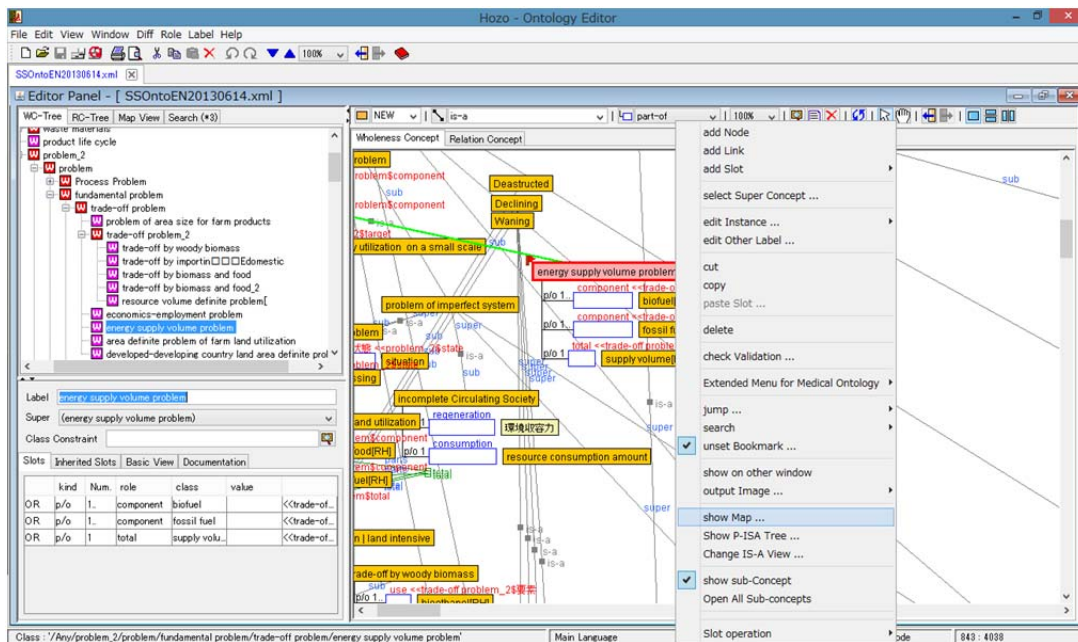
Choose a term (concept) you are interessted in as starting point of your map generation.

In this example, we chose “energy supply volume problem”.



4) The concept selected in 3) is now shown on the main windows and highlighted as selected.

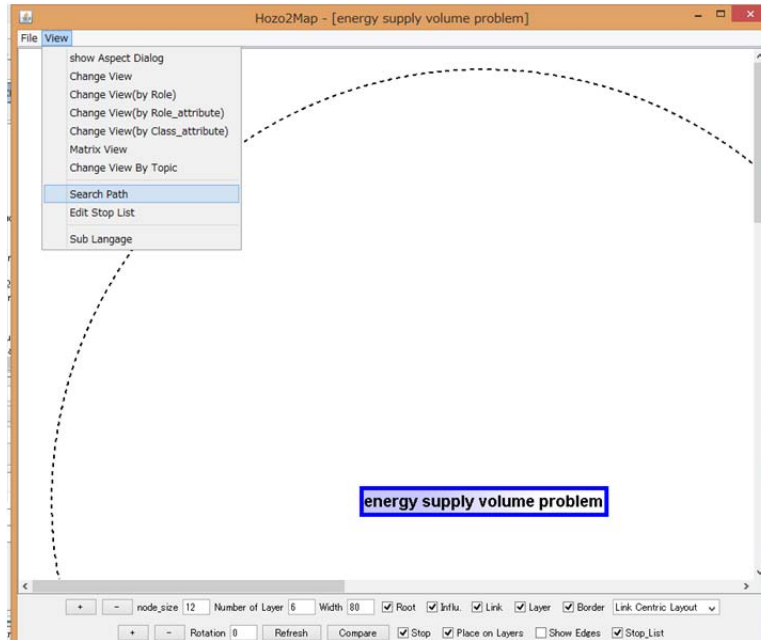
Right click the concept and choose “show Map” on the popup menu.



5) A window for map generation is shown. The concept selected in 4) is shown on the center of the map.

Select “view” menu -> “Search Path”.

This means that you search paths from the selected concept (the starting point) to some concepts which you choose as ending points in the next step.

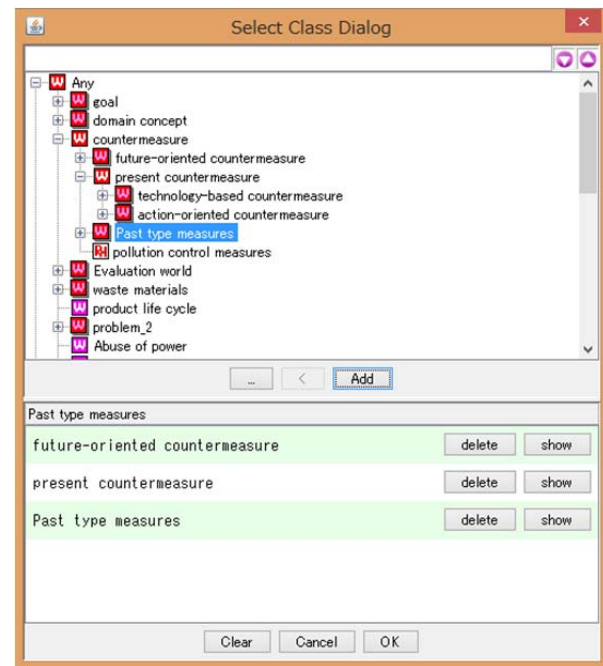


6) A dialog for selecting ending points is shown.

Select concept from a tree shown on the upper and press “add” button then selected concept is added as ending point for search path. The selected ending points are shown as a list on the bottom. If you want to remove a concept from the list, press “delete” button.

*We recommend you select ending points from sub trees of “countermeasure” or “Evaluation world”.

The former roughly corresponds to “STRATEGY”, “INCUBATE”, “CREATE” in the SEED-Framework and the later corresponds to “MEASURE” in it.



7) The resulting map is shown. You can edit this map using the following functions;

- Change ending points for search path:

Press “Edit” button on the Search Path dialog.

By selecting lower concepts as ending points, you can generate maps which focuses on more detailed concepts.

- Extend some paths:

Select a node and choose “Explore Related Concept” from right click menu if you want to explore details of some paths.

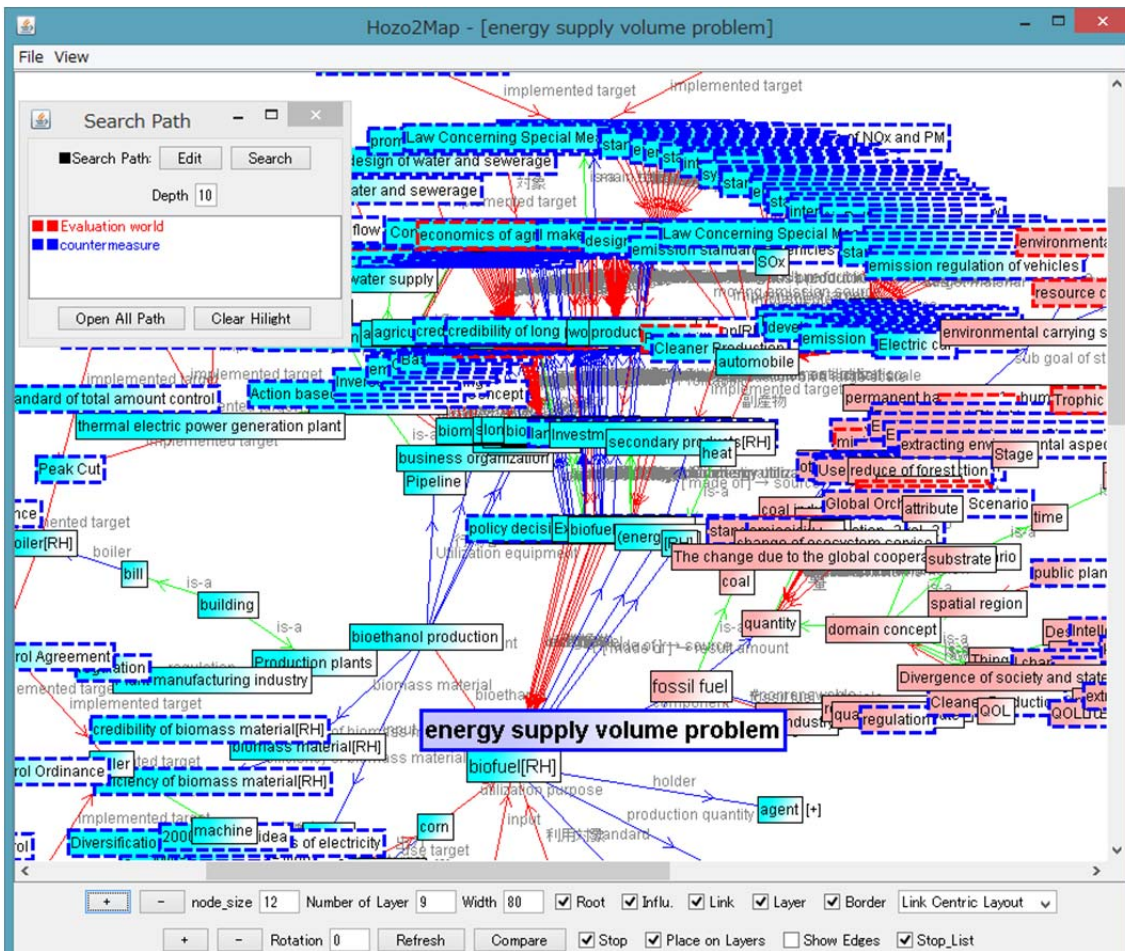
- **Close sub paths:**

Double click a node on the map when you want to close its sub-paths.

- **Cut sub paths:**

Select a node and choose “cut path” from right click menu when you want to remove the selected node and its sub-paths from the map.

... etc.



8) After you edit the map as you like, save the result by choosing “File” menu -> “Save map”. We will collect the resulting maps and integrate them.